

FLEXIBLE VIBRATOR SHAFTS

OPERATION & INSTRUCTION MANUAL

Thank you for your selection of a Flexible Vibrator Shaft.

This Operation Manual explains its use, installation, checking and maintenance. We highly recommend that you retain this manual for ready reference regarding proper handling of the Flexible Vibrator Shaft.



Spare Parts & Service

Phone: 1300 554 524

Freecall Fax: 1800 636 281

spareparts@crommelins.com.au

www.crommelins.com.au



Thank you very much for purchasing a FLEXIBLE VIBRATOR SHAFT.
This manual covers operation and maintenance of the FLEXIBLE VIBRATOR SHAFT.
This FLEXIBLE VIBRATOR SHAFT can be used in the mining, construction and hire industries.

Please take a moment to familiarise yourself with the proper operation and maintenance procedures in order to maximise the safe and efficient use of this product.

Keep this owner’s manual at hand, so that you can refer to it at anytime.
Due to constant efforts to improve our products, certain procedures and specifications are subject to change without notice.

When ordering spare parts please have handy your products model number and serial number. Record these numbers in the boxes below for future reference.

MODEL NO.

--	--	--	--	--	--	--	--	--	--	--	--	--	--	--	--	--	--	--

SERIAL NO.

--	--	--	--	--	--	--	--	--	--	--	--	--	--	--	--	--	--	--

CONTENTS

Introduction & Contents 2
Safety 3
Operation Tips 4
Maintenance & Warranty 5
Parts List 6
Notes 7

SAFETY

This manual contains important information on how to use the following vibrator shaft models JV25, JV28, JV38, JV45 and JV60 properly and safely. Please read through this manual before you attempt to use this product.

Ensure safe operation, this flexible vibrator shaft is designed to give safe and dependable service if operated according to the instructions.

- Do not contact the tool head with hands or feet during operation.

To prevent injury wear the following protective items: Gloves, hard hat, work boots, ear plugs, safety glasses and any other protective items required by job conditions.



OPERATION TIPS

- Match vibrator motor, shaft and head to the job. Select the largest vibrator suitable for the job. Select the shortest shaft possible to do the job to assure maximum power to the vibrator head.
- Avoid sharp bends in the flexible shaft for highest efficiency.
- Insert vibrator vertically, allow it to sink to the desired depth by its own weight, forcing it may lock it between re-bars.
- Hold the vibrator 5-15 seconds then slowly lift vibrator up, staying behind the trapped air's upward movement, allowing about 15 seconds for a 2 foot distance, to avoid re-trapped air.
- A slight up and downward movement will close the hole formed by the vibrator.
- Withdraw the vibrator quickly when near the top, to prevent churning air into the top layer.
- Move vibrator and re-insert at a distance of $1 \frac{1}{2}$ times the radius of action.
- Allow the vibrator to penetrate 3 to 6 inches into the preceding layer to knit the two layers together to prevent "lift lines" when forms are removed.
- Try to limit pours to 2 feet high, so air has less resistance to escape.
- Do not use vibrator to move concrete laterally as it can cause segregation (use a shovel). Place vibrator in centre of mounds to knock them down.
- NEVER operate head out of the mix for more than a few minutes to prevent overheating. Wet concrete keeps head at proper operating temperature.



MAINTENANCE

- Lubricate the flexible shaft assembly after every 40 hours of operation to prevent dry spots that cause overheating. Remove the inner core and wipe clean. Coat core with 1/16" of lubricant. Do not over lubricate since this will shorten the life of the shaft.
- Replace worn or broken casing to prevent damage to core and head.
- Avoid sharp bends in flexible shaft, not only in operation but also when storing.
- Do not use flexible shaft to pull drive unit.
- Never install a new core in a kinked casing or a kinked core in a new casing. The parts will be ruined instantly.

WARRANTY

Consult the CROMMELINS Machinery warranty leaflet (supplied with your new product) for full details and a list of service dealers for this product, also available online at www.crommelins.com.au.

CROMMELINS PRODUCTS

WARRANTY

CROMMELINS WARRANTY EXPLAINED
Crommelins Machinery warrants their goods against defects in materials and workmanship under normal use and service.
The Crommelins Machinery warranty does not cover fire, abuse, contamination with the age of the product, an improper operation, accident, misuse, neglect or failure to observe or proper operating instructions or proper maintenance as described in the instruction manual.
It is the owners responsibility to regularly maintain a product in accordance to the owners manual and only use the equipment for its designated purpose.
Our goods come with guarantees that cannot be excluded under the Australian Consumer Law. You are entitled to a replacement or refund for a major failure and for compensation for any other reasonably foreseeable loss or damage. You are also entitled to have goods repaired or replaced if the goods fail to be acceptable quality and/or where there does not amount to a major failure.

CONSUMER ADVICE
An item under their own label must be made within warranty period from the date of purchase of the product.
Refer to the list of Warranty and Service Agents listed in the National Authorised Service Agents (NASSA) directory for your nearest authorised warranty repair agent.
*Please refer to the list of agents at the Service Agents Tab (at the top) or contact 1300 650 000 for more information.
To make a claim under the warranty, you must return the product (with proof of purchase) to the closest warranty agent to the date of purchase.
Where a failure does not amount to a major failure, Crommelins Machinery is entitled to choose between providing you with a repair, replacement or refund. To facilitate compensation, you must need to provide documentary evidence of the loss or damage suffered, and documentary evidence that such loss or damage was unavoidable. For avoidance of doubt, a failure by Crommelins Machinery to comply with a consumer guarantee under the Australian Consumer Law.

3 YEAR SUBARU ENGINES WARRANTY
Subaru Industrial Engine come with a 3 year manufacturer's warranty.
2 YEAR CROMMELINS WARRANTY
CROMMELINS brand products powered by a Subaru Industrial Engine come with a 2 year manufacturer's warranty and a 1 year Subaru engine warranty.
1 YEAR OTHER PRODUCTS WARRANTY
All other Crommelins brand products including flexible drive products and high pressure pump come with a 1 year manufacturer's warranty.

Crommelins Operations Pty Ltd
100 Crommelins Road
Melbourne, VIC 3000
Australia
Ph: (03) 9338 1000
Fax: (03) 9338 1000
www.crommelins.com.au

CROMMELINSTM MACHINERY

Perth Sydney Brisbane Melbourne Adelaide

WARRANTY

IMPORTANT WARRANTY DETAILS ENCLOSED

3 YEAR
Manufacturer's warranty on SUBARU Industrial Engines

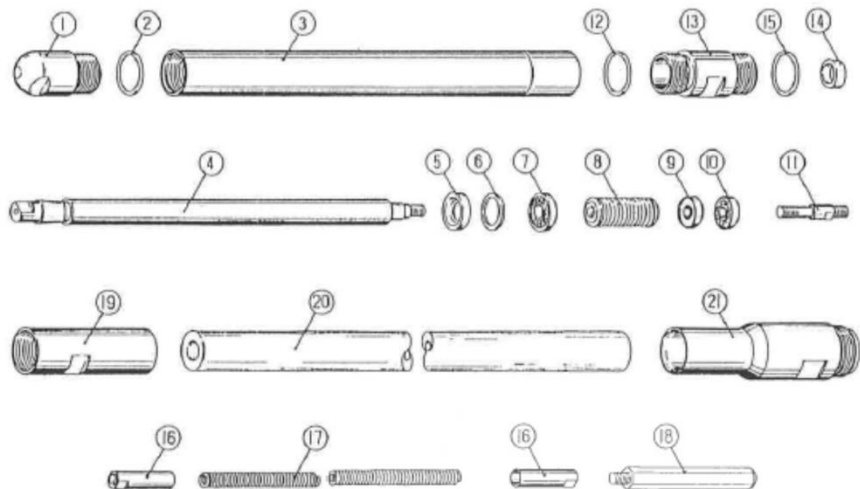
2 YEAR
Manufacturer's warranty on CROMMELINSTM brand products fitted with a SUBARU Industrial Engine

1 YEAR
Manufacturer's warranty on all other Crommelins Machinery products. Flexible drive products and high pressure pumps

SUBARU
Industrial Engine Products

www.crommelins.com.au

Parts List For Pendulous Type Concrete Vibrator



Parts No.	Parts Name	Model					Qty
		28	32	38	45	60	
1	Cap						1
2	O Ring	S20	S25	S30	G35	G50	1
3	Housing						1
4	Rotary Shaft						1
5	Oil Seal	TC12.25.7	TC12.25.7	TC16.28.7	TC18.32.7	TC.25.45.11	1
6	Collar						1
7	Bearing	129WAC3	129WAC3	2200MC3	2202MC3	2204MC3	1
8	Connecting Spring						1
9	Bearing	608Z	608Z	6000Z	6000Z	6201Z	1
10	Bearing	608	608	6000	6000	6201	1
11	Shaft Joint C						1
12	O Ring	S25	S25	G25	G35	G50	1
13	Hose Joint C						1
14	Oil Seal	SB10.20.7	SB10.20.7	SB14.24.6	SB14.24.6	SB15.30.7	1
15	O Ring	S25	S25	G25	G25	38.1-M1.3	1
16	Shaft Joint B						2
17	Flexible Shaft	8mm	10mm	10mm	10mm	13mm	1
18	Shaft Joint A						1
19	Hose Joint B						1
20	Flexible Hose	24.5mm	30mm	30mm	30mm	33mm	1
21	Hose Joint B1						1

NOTES

A series of 20 horizontal dotted lines for writing notes.

